

ECONOMIC DEVELOPMENT

PROJECT WINS IN TRI-COUNTY | 2011-2022

Presented by



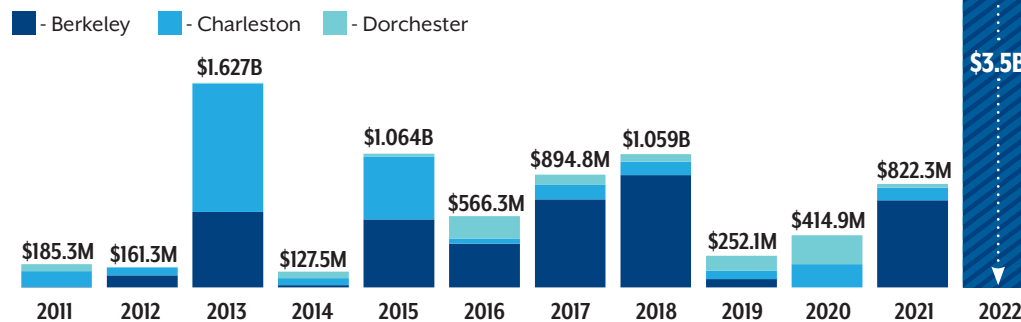
BERKELEY-CHARLESTON-DORCHESTER
COUNCIL OF GOVERNMENTS
PLANNING, PARTNERSHIP & PROSPERITY

Published 4.18.23

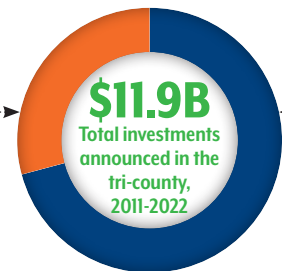
2022 was a BIG year

The tri-county region is no stranger to large economic development investments. However, 2022 far exceeded any previous year, when the largest economic development announcement in S.C. history was unveiled. **Redwood Materials announced a \$3.5 billion investment** to build a 600-acre campus at Camp Hall Commerce Park in Berkeley County. The company plans to produce anode and cathode battery components for electric vehicles, made out of as much recycled material as possible, creating 1,500 jobs. Even if that announcement didn't occur, 2022 would have still been the second highest year for investments announced since 2011, showing just how strong the year proved to be.

Total announced investments in the tri-county, 2011-2022



Rendering/Redwood Materials



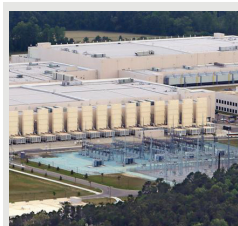
\$3.5B Redwood Materials Investment
\$8.4B All other investments, 2011-2022

The \$3.5B investment accounted for 29% of the total investment in the region from 2011-2022.

Largest investment announcements in the tri-county, 2011-2022

The majority of the largest investments were for expansions by existing companies, indicating their satisfaction with doing business in the region and belief they can achieve their future goals right here. Three of the ten largest announcements since 2011 occurred in 2022.

Date	Company	Amount	Type
12/2022	Redwood Materials, Inc.	\$3.5B	New
4/2013	Boeing South Carolina	\$1.0B	Expansion
9/2017	Volvo Car USA, LLC	\$620M	Expansion
1/2013	Google Data Center	\$600M	Expansion
8/2018	Google Data Center	\$600M	Expansion
3/2015	Mercedes-Benz Group AG	\$500M	Expansion
5/2015	Volvo Car USA, LLC	\$500M	New
3/2021	Google Data Center	\$500M	Expansion
9/2022	Nucor Corporation	\$425M	Expansion
10/2022	Robert Bosch, LLC	\$260M	Expansion



Google has made multiple investments in their Berkeley County data center since their initial \$600M investment in 2007. Their total investment now stands at \$2.9 billion.

Largest number of jobs announced in the tri-county, 2011-2022

Between 2011 and 2022, a total of \$11.9B was invested, with the projection that 31,278 jobs would be created.

Date	Company	Jobs	Type
5/2015	Volvo Car USA, LLC	2,500	New
4/2013	Boeing South Carolina	2,000	Expansion
9/2017	Volvo Car USA, LLC	1,910	Expansion
12/2022	Redwood Materials, Inc.	1,500	New
3/2015	Mercedes-Benz Group AG	1,300	Expansion
12/2013	Benefitfocus.com, Inc.	1,200	Expansion
8/2021	TELUS International	1,200	New
7/2020	Walmart Distribution Center	1,000	New
12/2018	W International	600	New
4/2016	Comcast Cable Corporation	550	New

Source: S.C. Department of Commerce

For economic development inquiries contact: Ryan Wilcox | ryanw@bcdcog.com | 843.529.2709