

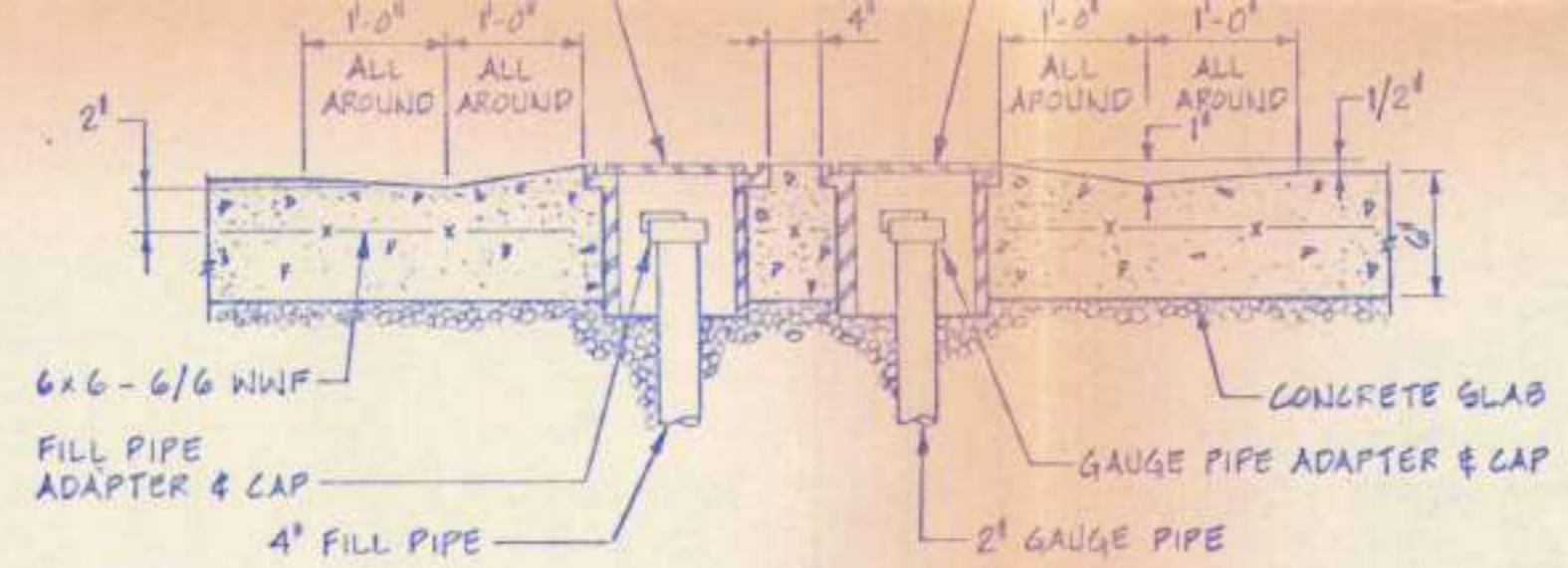
SIDE VIEW

END VIEW

TANKS TO BE SUPPLIED AS FOLLOWS:
 NO. 1 DIESEL FUEL - 20,000 GALLONS
 NO. 2 DIESEL FUEL - 10,000 GALLONS
 UNLEADED GASOLINE - 10,000 GALLONS

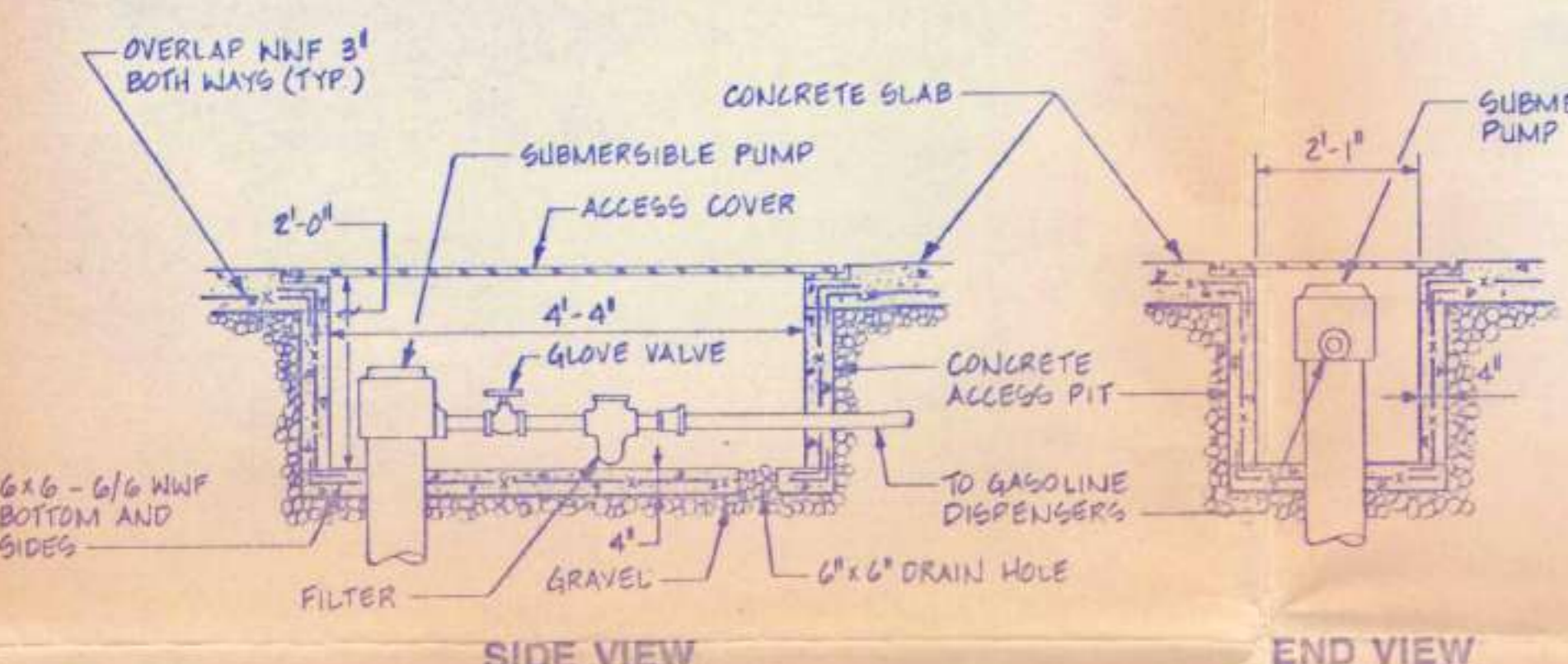
1 GASOLINE & FUEL STORAGE TANK DETAIL (TYPICAL)

P-10 NO SCALE



4 GASOLINE & FUEL FILL & GAUGE BOX DETAIL (TYPICAL)

P-10 NO SCALE

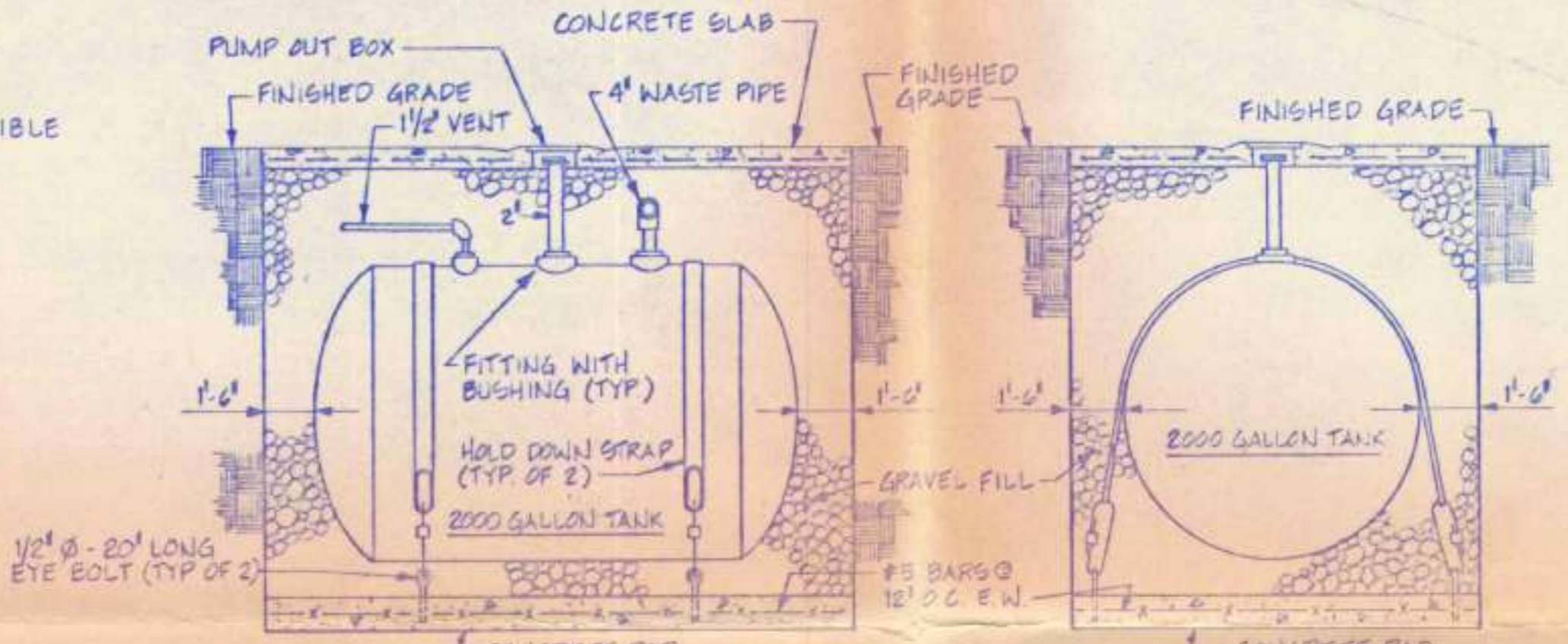


SIDE VIEW

END VIEW

2 GASOLINE & FUEL PUMP ACCESS PIT DETAIL (TYPICAL)

P-10 NO SCALE

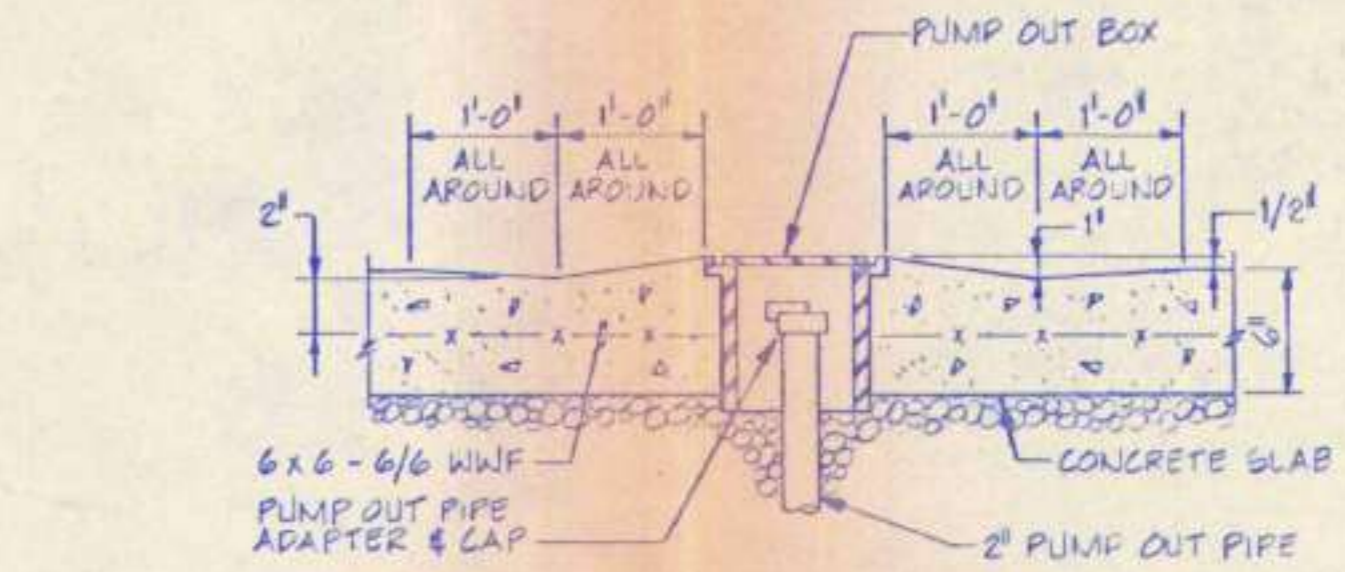


SIDE VIEW

END VIEW

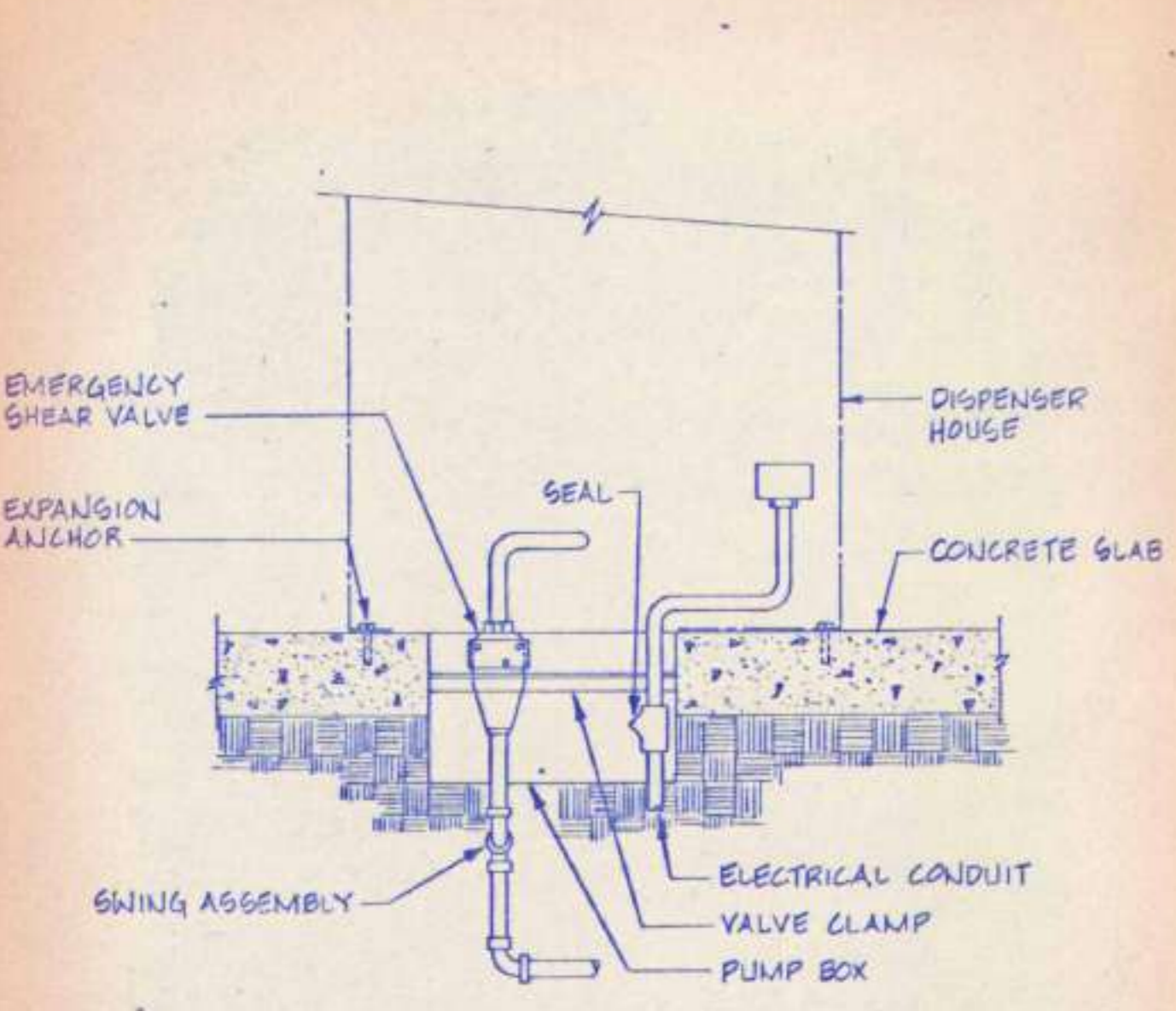
5 WASTE OIL STORAGE TANK DETAIL (TYPICAL)

P-10 NO SCALE



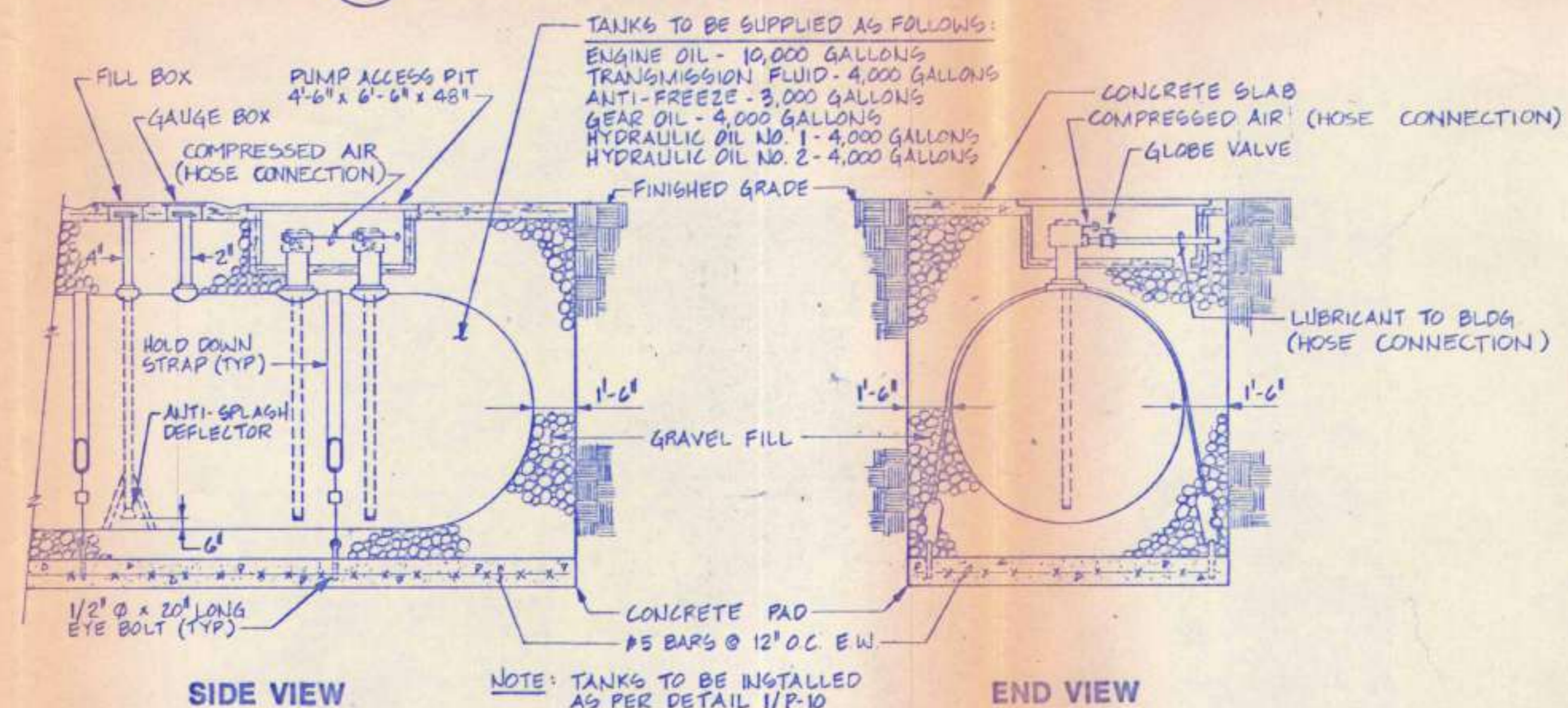
7 WASTE OIL PUMP OUT BOX DETAIL (TYPICAL)

P-10 NO SCALE



3 GASOLINE & FUEL DISPENSING UNIT CONNECTION DETAIL (TYPICAL)

P-10 NO SCALE



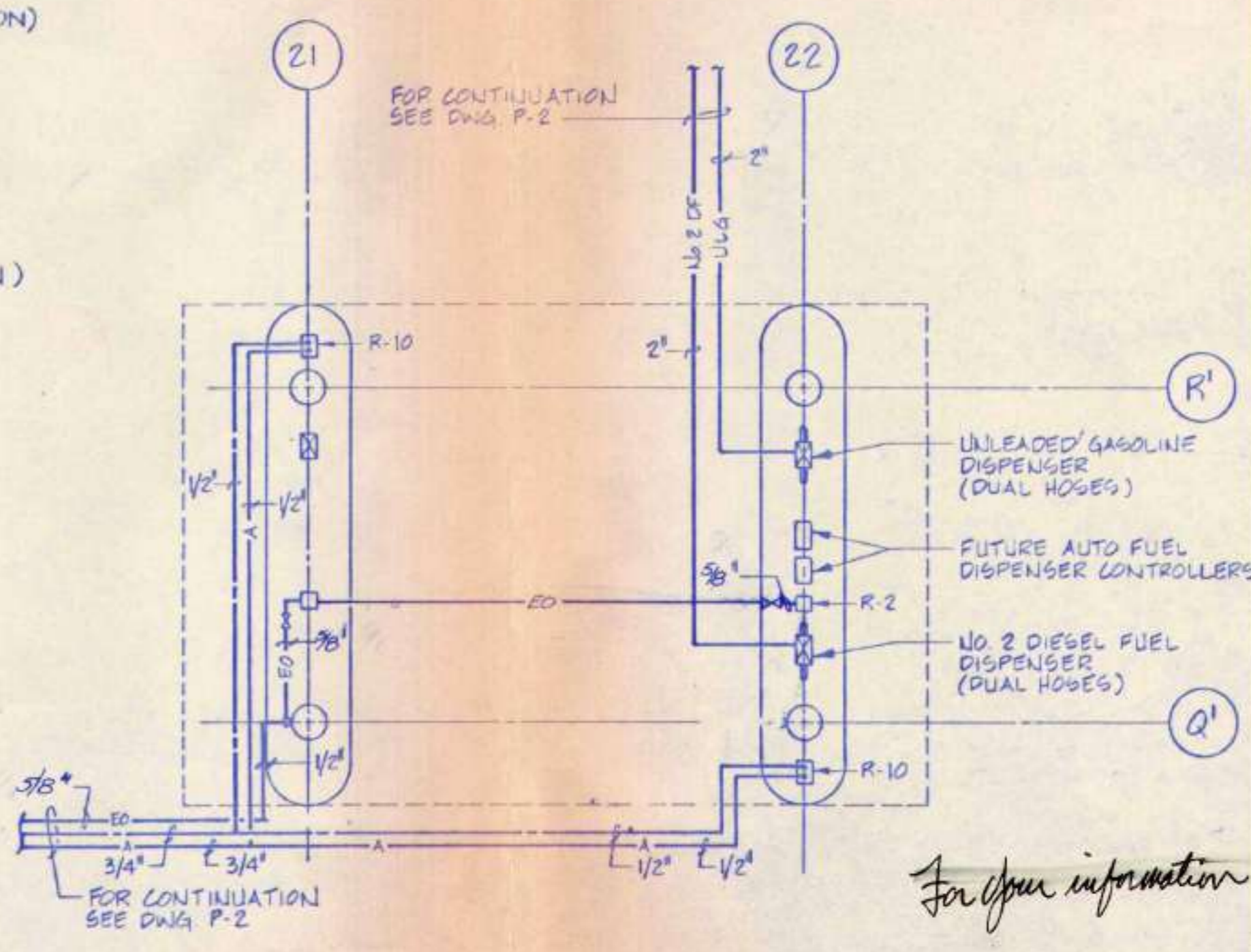
SIDE VIEW

END VIEW

6 LUBRICANT STORAGE TANK DETAIL (TYPICAL)

P-10 NO SCALE

NOTE: TANKS TO BE INSTALLED AS PER DETAIL 1/P-10



8 FUEL ISLAND PLAN - PLUMBING

P-10 1/8\"/>

REGISTERED ARCHITECT
ms
 LUCAS STUBBS PASCELLI POWELL & PENNEY LTD.
 ARCHITECTS PLANNERS INTERIOR DESIGNERS LANDSCAPE ARCHITECTS

Southern Division
 Transit and Fleet Maintenance Center

DATE: JUNE 25, 1985
 DRAWN: J. M. GARTENBERG
 CHECKED: S. MOLIVAZZI
 REVISIONS:

CHARLES CLIFTON FRANKLIN
 REGISTERED PROFESSIONAL ENGINEER
 No. 0087
 SOUTH CAROLINA

COMMISSION
8467.00
FUEL STORAGE DETAILS

0-216655

P-10

For your information

2816-047