



RIVERLAND DRIVE CORRIDOR MANAGEMENT PLAN

PUBLIC MEETING – APRIL 8, 2014

PUBLIC MEETING AGENDA

- **Overview of Riverland Drive Scenic Byway**
- **What is a Corridor Management Plan?**
- **Project Purpose**
- **CMP Study Goals**
- **Schedule/Timeline**
- **Breakout Group Exercise**
- **Next Steps**

RIVERLAND DRIVE SCENIC BYWAY

- Riverland Drive was designated a SCDOT scenic byway in 1988.
- The scenic byway is 4.85 miles in length from Wapoo Hall Road to Grimball Road
- Corridor has a diversity of scenic, historic, cultural, and natural resources
- BCDCOG received a FHWA National Scenic Byways grant to prepare the CMP

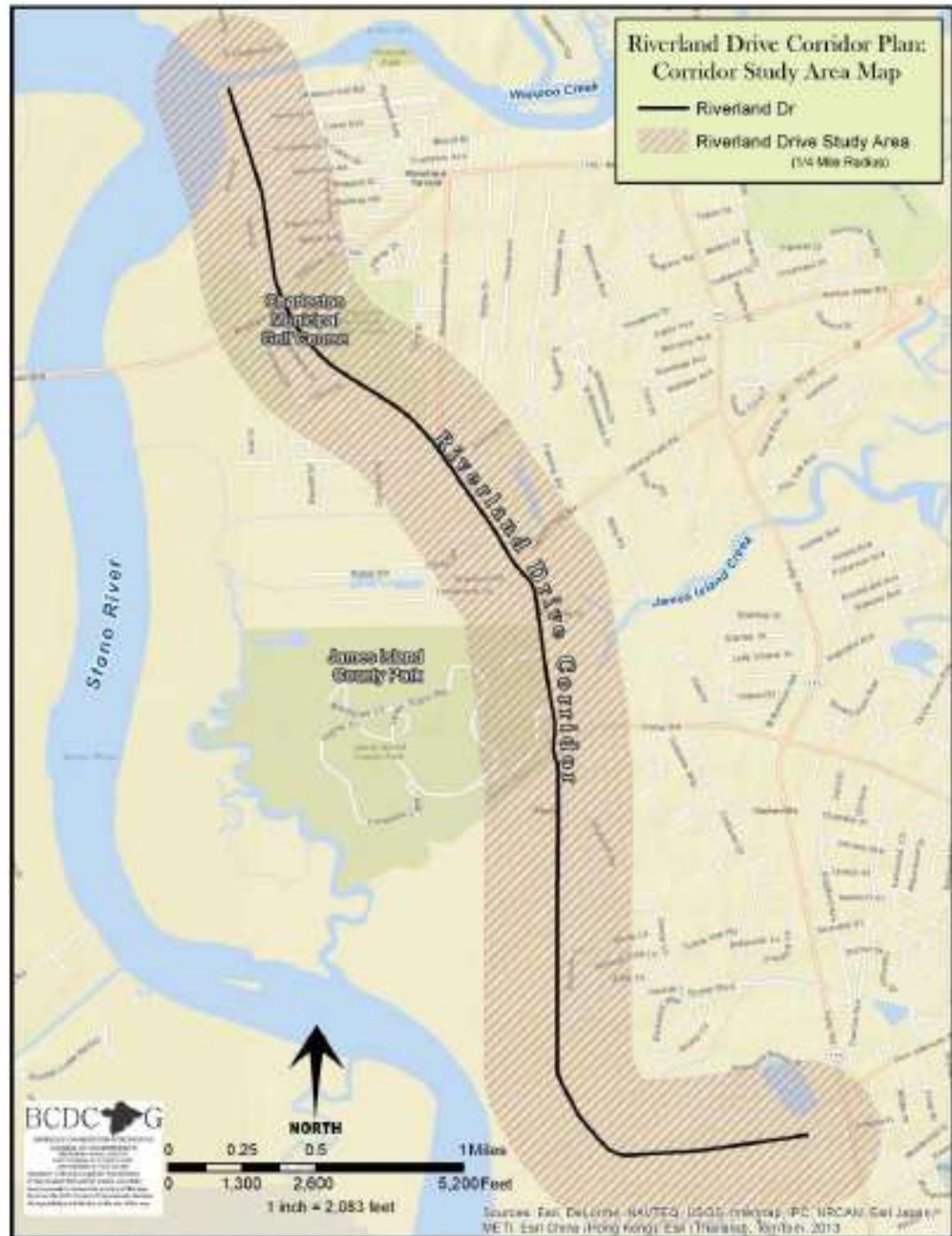


RIVERLAND DRIVE SCENIC BYWAY



STUDY AREA MAP

- Study Area of the Corridor Management Plan



RIVERLAND DRIVE TODAY



Historical Significance



Unique Natural Beauty



Rich Heritage

HISTORY OF RIVERLAND DRIVE

- Riverland Drive is a remnant of King's Highway, which was completed in 1717.
- King's Highway was a roughly 1,300-mile (2,100 km) road laid out in the American colonies
- It was built on the order of King Charles II of England starting in 1650, who directed his colonial governors to link Charleston, SC and Boston, MA.

HISTORY OF RIVERLAND DRIVE

- **During the Civil War, James Island became pivotal in the battle for Charleston.**
- **Earthworks were constructed throughout James Island in anticipation of both land and sea attacks.**
- **Several Freedman areas of the Dill Plantation are in the Riverland Drive corridor**

WHAT IS A CORRIDOR MANAGEMENT PLAN?

- **A Corridor Management Plan is a written plan developed by the community and stakeholders along a scenic byway.**
- **An inventory of the defining characteristics, features, and resources associated with the byway**
- **CMPs typically address historic and cultural preservation, roadway safety, and tourism development.**
- **Defines how existing development can be enhanced and new development might be accommodated while still preserving the unique qualities of the corridor.**
- **Provides a vision for the corridor over a 10-15 year period**

OTHER CMP'S IN SOUTH CAROLINA

- Ashley River Road Scenic Byway Management Plan (2002)
- Bohicket Road Corridor Management Plan (2008)
- SC 46 Corridor Management Plan in Bluffton (2005)

CORRIDOR MANAGEMENT PLAN FOR SC 46



Bluffton, South Carolina

WYTHE CORPORATION, P.O. Box 11151, Bowling Green, KY 42302 (278)743-0000 wythe@wythe.com
<http://www.wythe.com>

PURPOSE OF THE RIVERLAND DR. CMP

A Corridor Management Plan (CMP) is a written plan developed by the community along a scenic byway that outlines how to preserve, protect, and enhance the byway's character and assets that define the corridor.

PURPOSE OF THE RIVERLAND DR. CMP

- **Develop an awareness of the unique scenic and special qualities of the Riverland Drive Scenic Byway**
- **Community-based plan as a starting dialogue for the future of the corridor**
- **Identify how to preserve the special qualities of the corridor including the live oak canopies, marsh vistas, adjoining open space and historic landscapes**
- **Develop a guiding vision with goals, recommendations, and implementation strategies moving forward**
- **This is just a starting point!**

INTRINSIC QUALITIES OF RIVERLAND DRIVE

- **Natural Qualities:** Live oaks, marshlands, wildlife.
- **Scenic Qualities:** Viewsheds, open fields, Stono River.
- **Historic:** Dill Sanctuary, Battery Pringle siege line, Battery LeRoy, Battery Tyne, Riverland Terrace.
- **Cultural:** Slave Row (tenant farms) and the agricultural methods of the 19th century.
- **Archaeological:** Civil War earthworks
- **Recreational:** The Municipal Golf Course, the Lowcountry Senior Center, and the James Island County Park.

NATURAL AND SCENIC RESOURCES



HISTORIC RESOURCES



Caretaker's House – Dill Sanctuary c. 1915

CULTURAL RESOURCES

- National Register of Historic Places
- Archaeological Sites
- Landmarks protected by the City of Charleston Landmark Overlay Zoning



RECREATIONAL RESOURCES



TRANSPORTATION AND ROADWAY SAFETY

- Identify transportation and safety issues along the corridor
- Provide guidance on how to protect the integrity of Riverland Drive with traffic or roadway improvements along the corridor
- Recommend safety and connectivity improvements along the corridor



TECHNICAL ADVISORY COMMITTEE

- **Town of James Island**
- **City of Charleston**
- **Charleston County**
- **Charleston County Parks and Recreation**
- **SC Department of Transportation**

STUDY TIMELINE

- Kick-off public meeting – April 8th
- Second Technical advisory committee (TAC) meeting in May
- Discuss CMP plan vision, goals, recommendations at second public meeting in late June
- Third TAC meeting in July
- Draft plan for public review and comments in late August
- Final CMP completed in the Fall

RIVERLAND DRIVE PUBLIC INPUT

Three breakout groups:

- **Land Use and Natural Resources**
- **Cultural and Historic Resources**
- **Transportation and Roadway Safety**

RIVERLAND DRIVE PUBLIC INPUT

Breakout Groups:

- **Provide list of important qualities, features and landmarks along the corridor**
- **What constraints threaten the corridor today?**
- **What opportunities can make Riverland Drive a better place?**
- **Any additional thoughts or comments can be recorded on comment sheets**



RIVERLAND DRIVE CORRIDOR MANAGEMENT PLAN

PUBLIC MEETING – APRIL 8, 2014