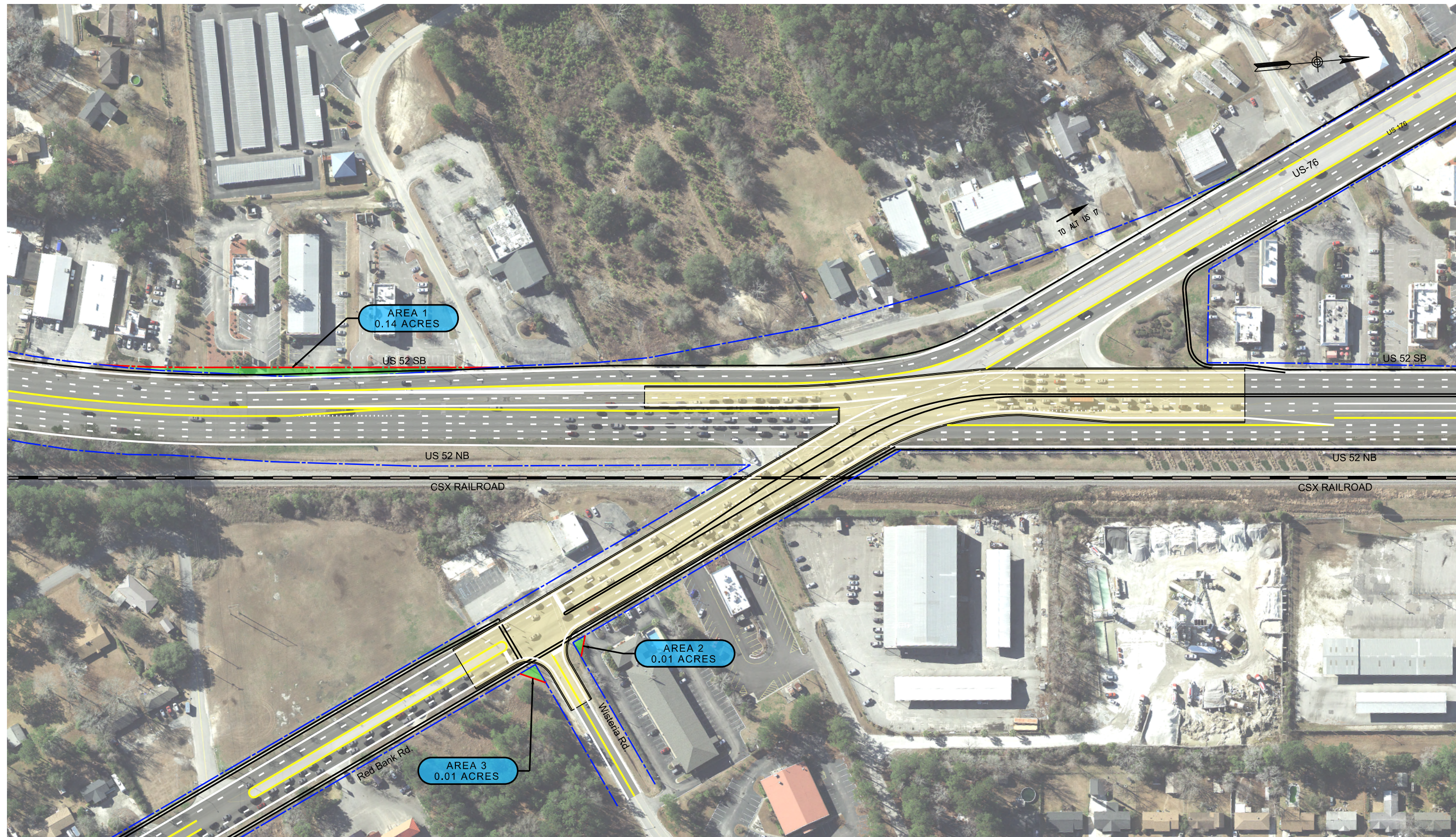


FED. ROAD DIST. NO.	STATE	COUNTY	PROJECT ID	ROUTE NO.	SHEET NO.
3	S.C.	BERKELEY		US 52	1



MATCHLINE SEE SHEET 2

Merewep I:\Projects\4020858\0001\90_CAD Models and Sheets\04_CT_Transportation\DCN\Transitway\for ROW plots\4020858_US52_ROW Exhibit.dgn 6/21/2023

LEGEND

- TRAFFIC IMPROVEMENTS ROW
- TRANSIT IMPROVEMENTS ROW

stv STV Incorporated
 4969 CENTRE POINTE DRIVE
 SUITE 102
 NORTH CHARLESTON, SOUTH CAROLINA 29418



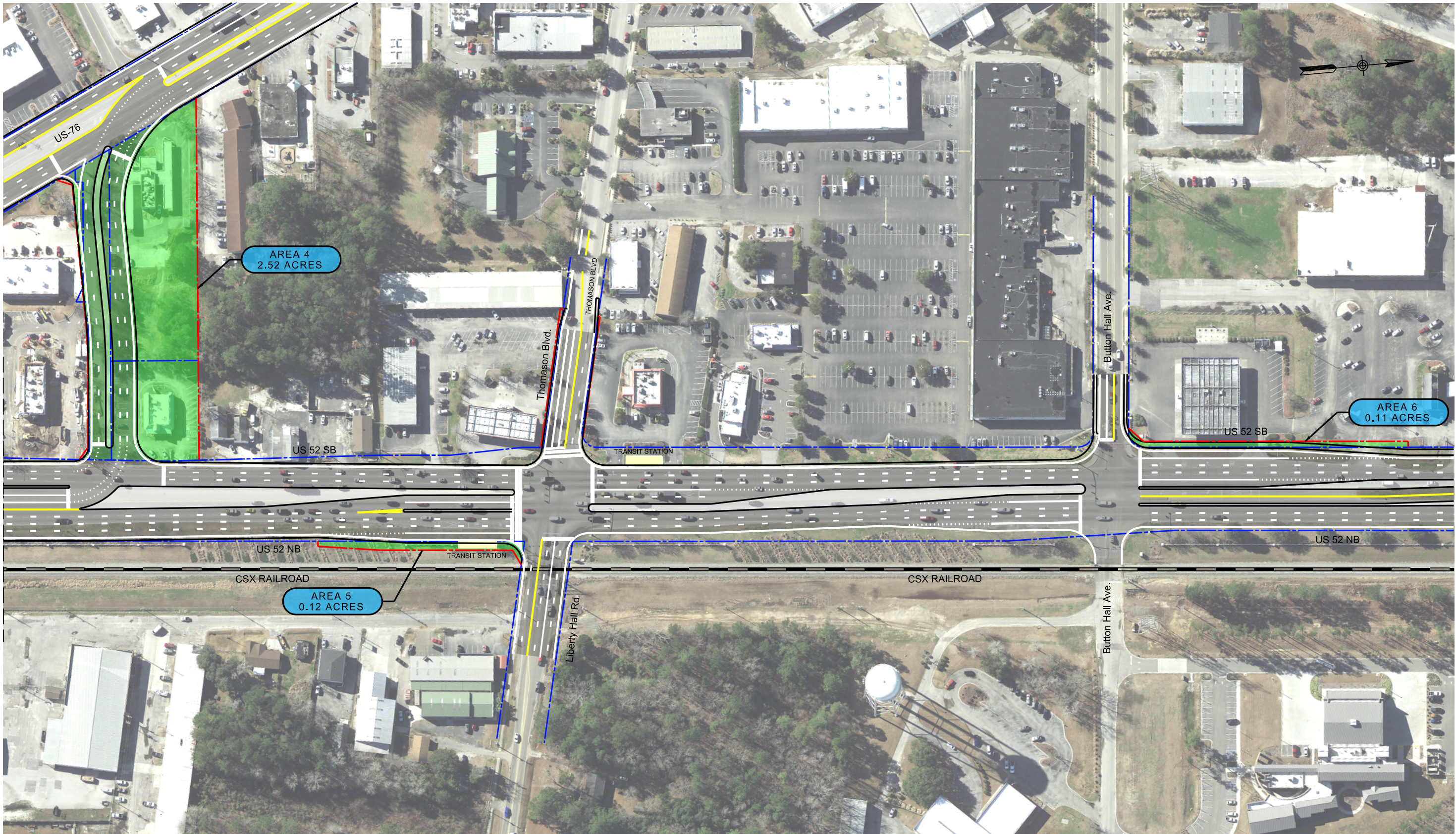
RIGHT-OF-WAY REQUIREMENTS

US 52
CORRIDOR STUDY

SHEET 1 OF 9

BCDCOG
 BERKELEY-CHARLESTON-DOUGHERTY
 COUNCIL OF GOVERNMENTS

FED. ROAD DIST. NO.	STATE	COUNTY	PROJECT ID	RTE. NO.	SHEET NO.
3	S.C.	BERKELEY		US 52	2



MATCHLINE SEE SHEET 1

Merewep I:\Projects\4020858\4020858_0001\90_CAD Models and Sheets\04_CT_Transportation\DCN\Transitway\for ROW plots\4020858_US52_ROW Exhibit.dgn 6/21/2023

LEGEND

- TRAFFIC IMPROVEMENTS ROW
- TRANSIT IMPROVEMENTS ROW

stv STV Incorporated
 4969 CENTRE POINTE DRIVE
 SUITE 102
 NORTH CHARLESTON, SOUTH CAROLINA 29418



RIGHT-OF-WAY REQUIREMENTS

US 52 CORRIDOR STUDY

SHEET 2 OF 9

BCDCOG
 BERKELEY-CHARLESTON-DOSCHESTER
 COUNCIL OF GOVERNMENTS

FED. ROAD DIST. NO.	STATE	COUNTY	PROJECT ID	ROUTE NO.	SHEET NO.
3	S.C.	BERKELEY		US 52	3



Merewep
 I:\Projects\4020858\4020858_0001\90_CAD Models and Sheets\04_CT_Transportation\DCN\Transitway\for ROW plots\4020858_US52_ROW Exhibit.dgn
 6/21/2023

MATCHLINE SEE SHEET 4

LEGEND

- TRAFFIC IMPROVEMENTS ROW
- TRANSIT IMPROVEMENTS ROW

STV Incorporated
 4969 CENTRE POINTE DRIVE
 SUITE 102
 NORTH CHARLESTON, SOUTH CAROLINA 29418



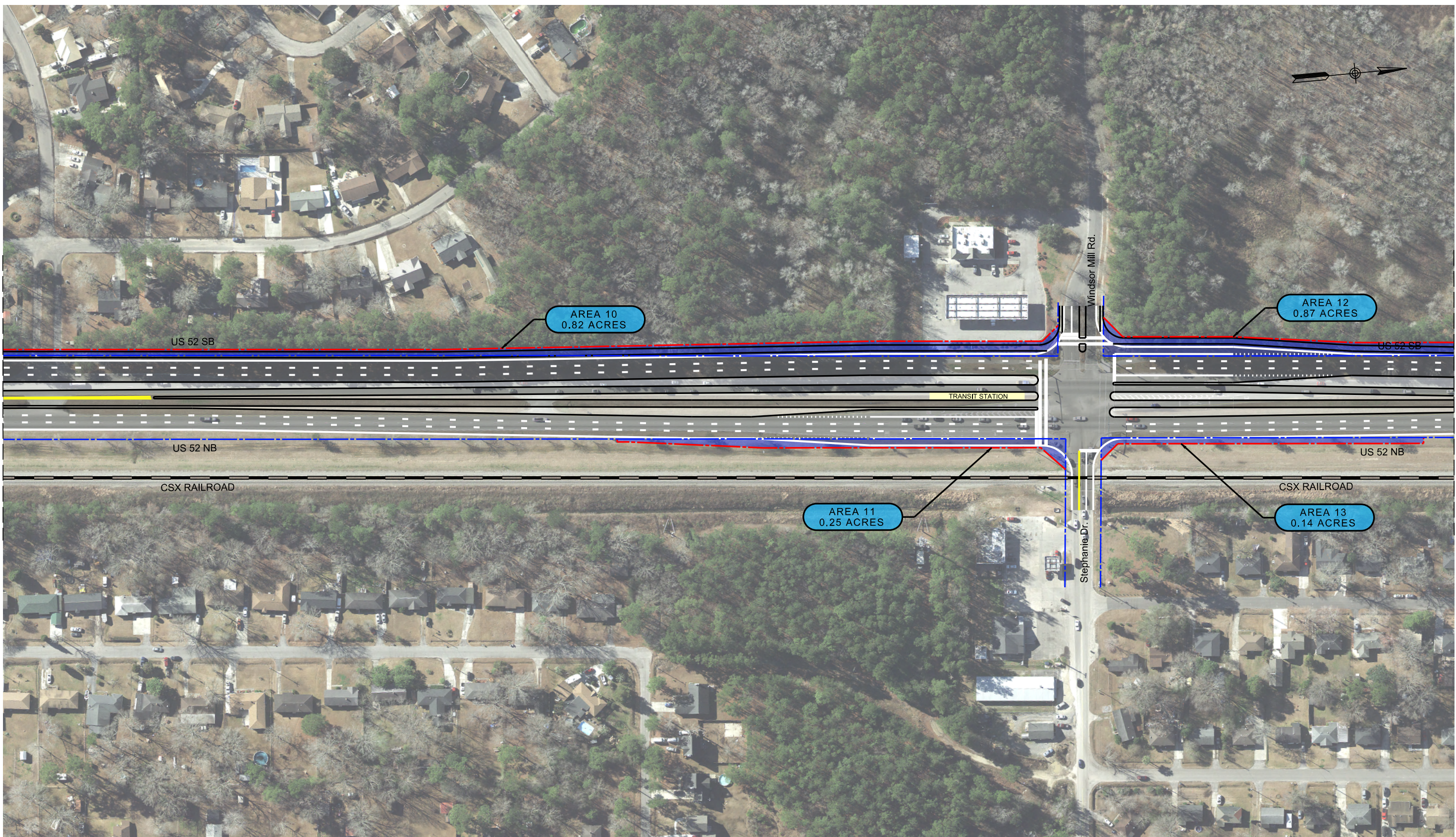
RIGHT-OF-WAY REQUIREMENTS



**US 52
CORRIDOR STUDY**

SHEET 3 OF 9

FED. ROAD DIST. NO.	STATE	COUNTY	PROJECT ID	ROUTE NO.	SHEET NO.
3	S.C.	BERKELEY		US 52	4



MATCHLINE SEE SHEET 3

MATCHLINE SEE SHEET 5

LEGEND

- TRAFFIC IMPROVEMENTS ROW
- TRANSIT IMPROVEMENTS ROW

stv STV Incorporated
 4969 CENTRE POINTE DRIVE
 SUITE 102
 NORTH CHARLESTON, SOUTH CAROLINA 29418



RIGHT-OF-WAY REQUIREMENTS

**US 52
CORRIDOR STUDY**

SHEET 4 OF 9

BERKELEY-CHARLESTON-DOSSCHESTER
 COUNCIL OF GOVERNMENTS

MereweP
 I:\Projects\4020858\0001\90_CAD Models and Sheets\04_C.T_Transportation\DCN\Transitway\for ROW plots\4020858_US52_ROW Exhibit.dgn
 6/21/2023

FED. ROAD DIST. NO.	STATE	COUNTY	PROJECT ID	ROUTE NO.	SHEET NO.
3	S.C.	BERKELEY		US 52	5



MATCHLINE SEE SHEET 4

AREA 12
0.87 ACRES



Merewep I:\Projects\4020858\0001\90_CAD Models and Sheets\04_CT_Transportation\DCN\Transitway\for ROW plots\4020858_US52_ROW Exhibit.dgn 6/21/2023

LEGEND

- TRAFFIC IMPROVEMENTS ROW
- TRANSIT IMPROVEMENTS ROW

stv STV Incorporated
 4969 CENTRE POINTE DRIVE
 SUITE 102
 NORTH CHARLESTON, SOUTH CAROLINA 29418

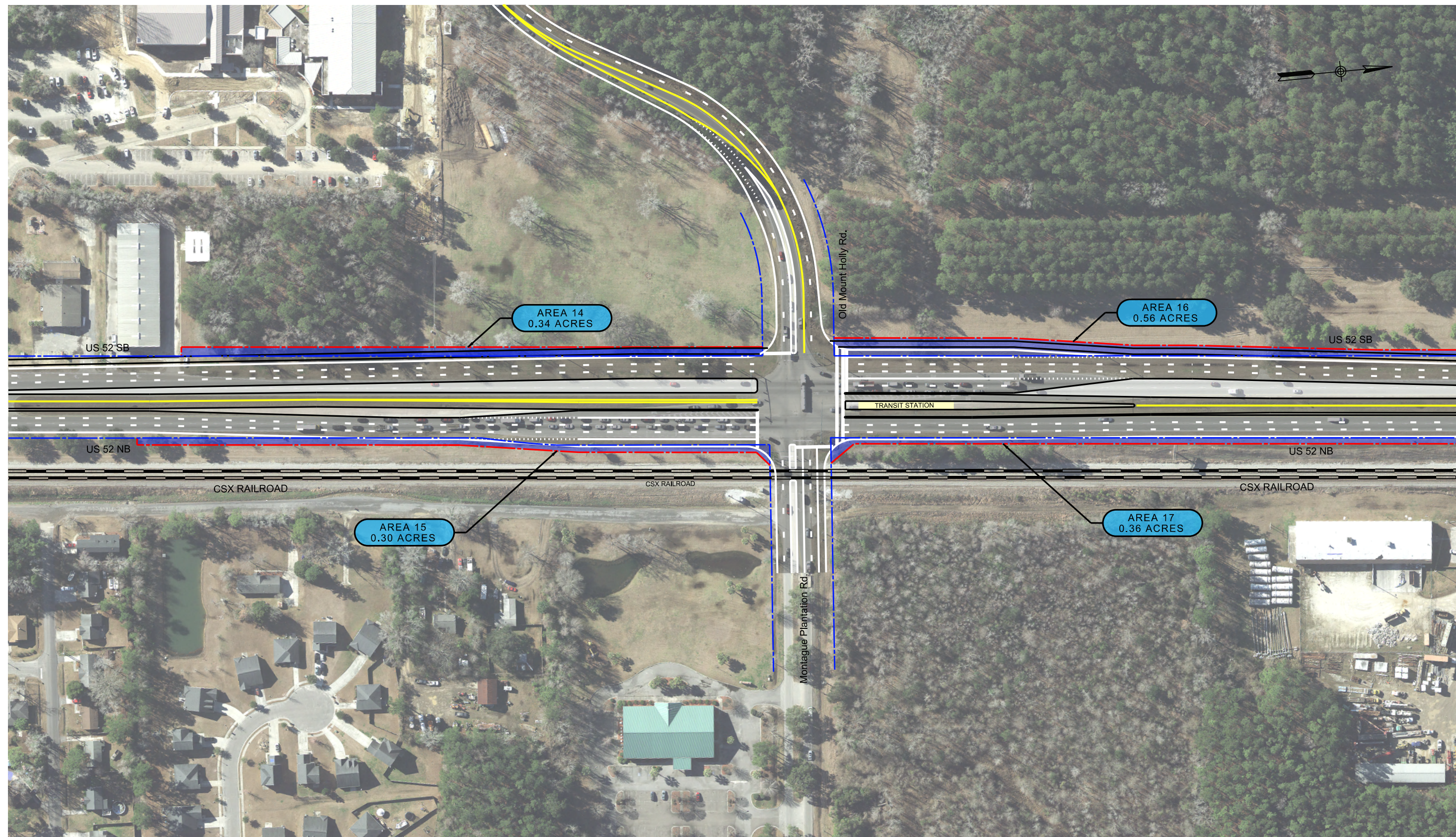


RIGHT-OF-WAY REQUIREMENTS

US 52 CORRIDOR STUDY

SHEET 5 OF 9

FED. ROAD DIST. NO.	STATE	COUNTY	PROJECT ID	ROUTE NO.	SHEET NO.
3	S.C.	BERKELEY		US 52	6



MATCHLINE SEE SHEET 7

MereweP I:\Projects\4020858\000\90_CAD Models and Sheets\04_CT_Transportation\DCN\Transitway\for ROW plots\4020858_US52_ROW Exhibit.dgn 6/21/2023

LEGEND

- TRAFFIC IMPROVEMENTS ROW
- TRANSIT IMPROVEMENTS ROW

stv STV Incorporated
 4969 CENTRE POINTE DRIVE
 SUITE 102
 NORTH CHARLESTON, SOUTH CAROLINA 29418



RIGHT-OF-WAY REQUIREMENTS

US 52 CORRIDOR STUDY

SHEET 6 OF 9

BERKELEY-CHARLESTON-DOUGHERTY COUNCIL OF GOVERNMENTS

FED. ROAD DIST. NO.	STATE	COUNTY	PROJECT ID	ROUTE NO.	SHEET NO.
3	S.C.	BERKELEY		US 52	7



MATCHLINE SEE SHEET 6

MereweP I:\Projects\4020858\0001\90_CAD Models and Sheets\04_CT_Transportation\DCN\Transitway\for ROW plots\4020858_US52_ROW Exhibit.dgn 6/21/2023

LEGEND

- TRAFFIC IMPROVEMENTS ROW
- TRANSIT IMPROVEMENTS ROW

stv STV Incorporated
 4969 CENTRE POINTE DRIVE
 SUITE 102
 NORTH CHARLESTON, SOUTH CAROLINA 29418



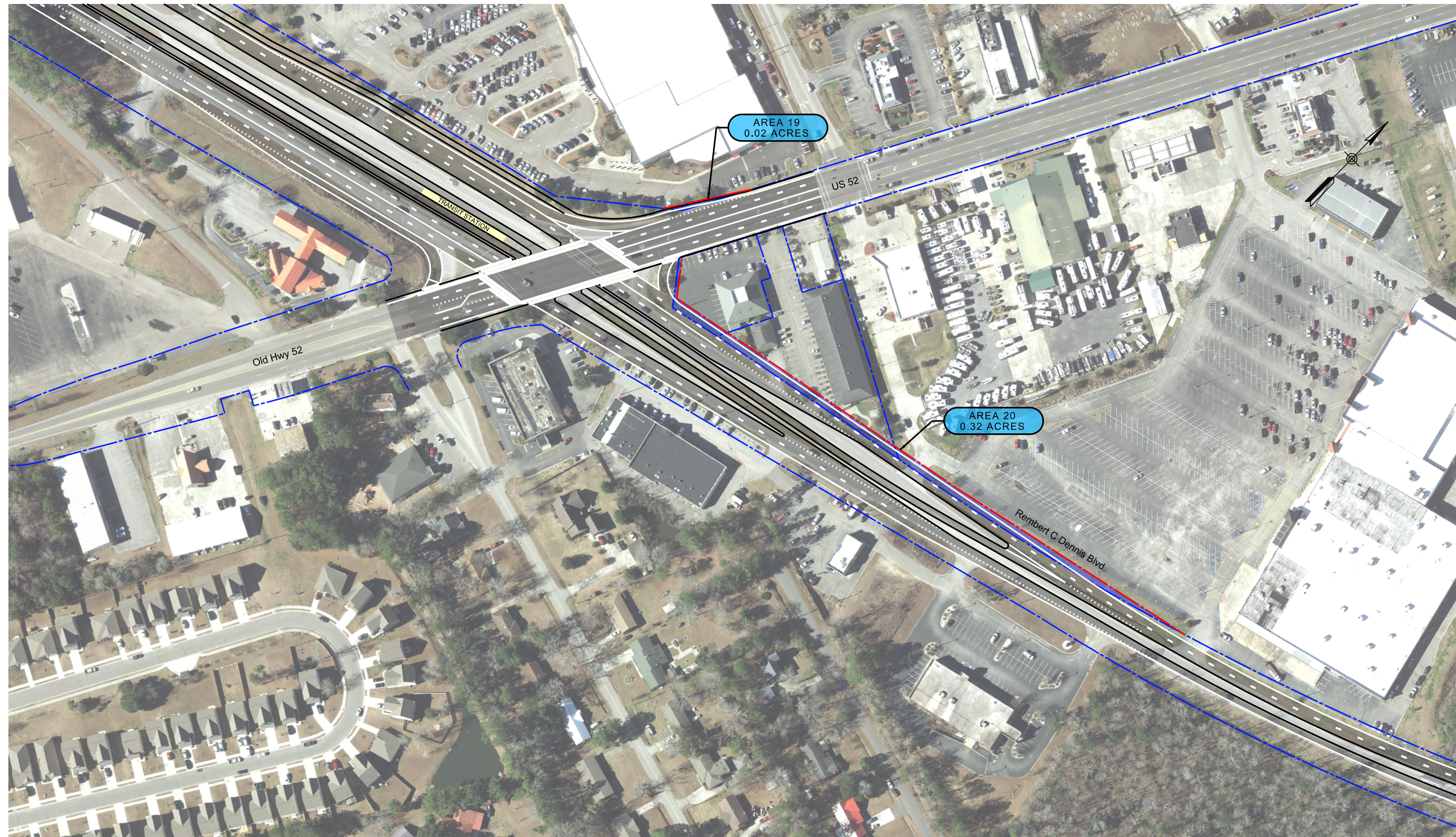
RIGHT-OF-WAY REQUIREMENTS



**US 52
CORRIDOR STUDY**

SHEET 7 OF 9

FED. ROAD DIST. NO.	STATE	COUNTY	PROJECT ID	RTE. NO.	SHEET NO.
3	S.C.	BERKELEY		US 52	8



MereweP
 I:\Projects\4020858\4020858_0001\90_CAD Models and Sheets\04_CT_Transportation\DCN\Transitway\for ROW plots\4020858_US52_ROW Exhibit.dgn
 6/21/2023

LEGEND

- TRAFFIC IMPROVEMENTS ROW
- TRANSIT IMPROVEMENTS ROW

stv STV Incorporated
 4969 CENTRE POINTE DRIVE
 SUITE 102
 NORTH CHARLESTON, SOUTH CAROLINA 29418



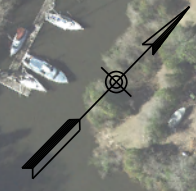
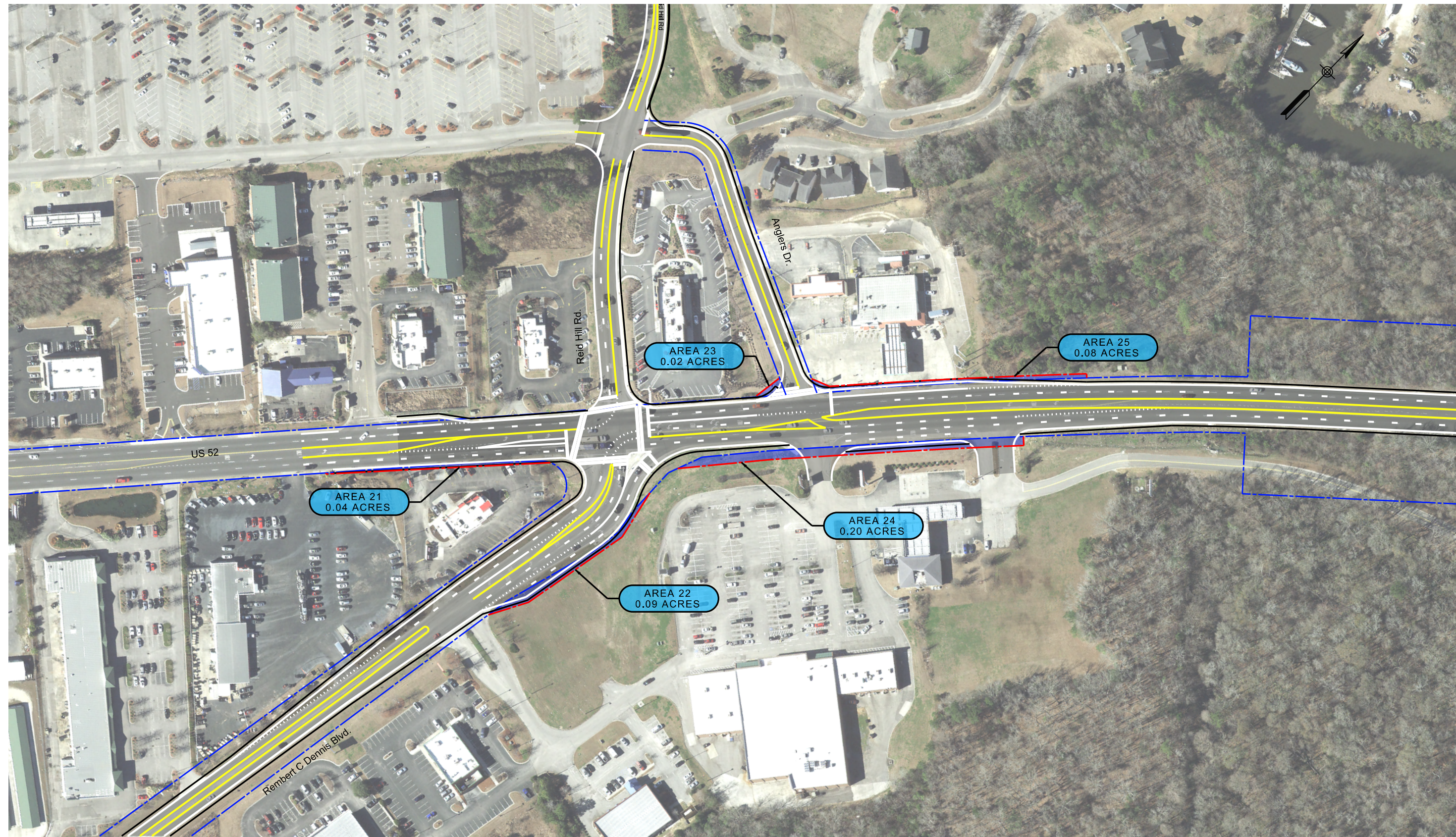
RIGHT-OF-WAY REQUIREMENTS

**US 52
CORRIDOR STUDY**

SHEET 8 OF 9

BERKELEY-CHARLESTON-DOSCHESTER
 COUNCIL OF GOVERNMENTS

FED. ROAD DIST. NO.	STATE	COUNTY	PROJECT ID	RTE. NO.	SHEET NO.
3	S.C.	BERKELEY		US 52	9



MereweP
 I:\Projects\4020858\000\90_CAD Models and Sheets\04_C.T_Transportation\DCN\Transitway\for ROW plots\4020858_US52_ROW Exhibit.dgn
 6/21/2023

LEGEND

- TRAFFIC IMPROVEMENTS ROW
- TRANSIT IMPROVEMENTS ROW

STV Incorporated
 4969 CENTRE POINTE DRIVE
 SUITE 102
 NORTH CHARLESTON, SOUTH CAROLINA 29418



RIGHT-OF-WAY REQUIREMENTS

US 52 CORRIDOR STUDY
 BERKELEY-CHARLESTON-DOUGHERTY
 COUNCIL OF GOVERNMENTS

SHEET 9 OF 9