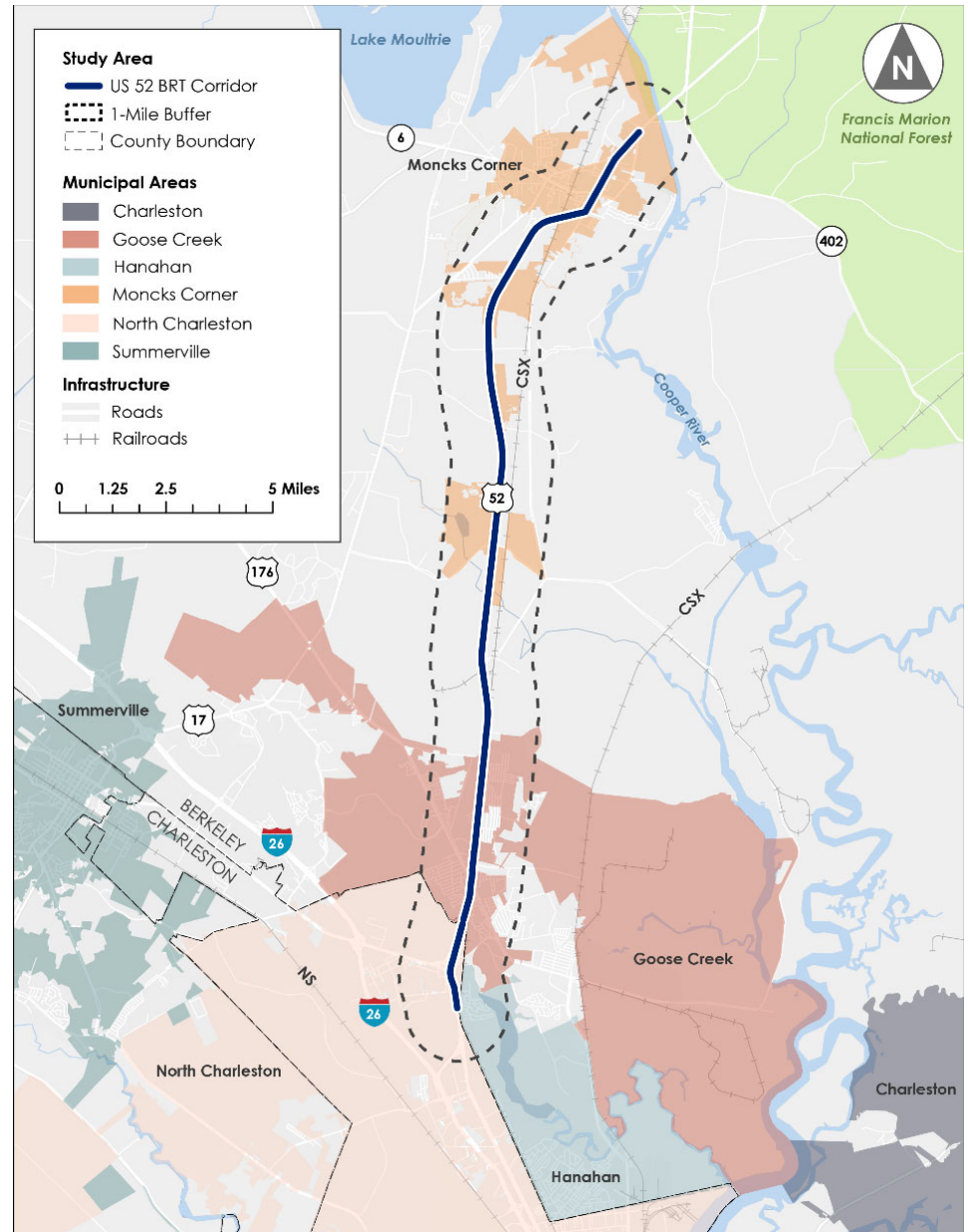


# Study Scope Overview

## The Study will:

- Assess the US 52 corridor from Moncks Corner to Goose Creek and North Charleston.
- Evaluate existing TriCounty Link Services in the corridor to:
  - Improve access to service, and
  - Increase ridership
- Assess the feasibility and steps of transitioning TriCounty Link's (TCL) fixed-route service to Bus Rapid Transit (BRT).
- Define how to connect to the planned Lowcountry Rapid Transit project.
- Evaluate the corridor alignments, station locations, funding, design features, local feeder transit services, and program alternatives.



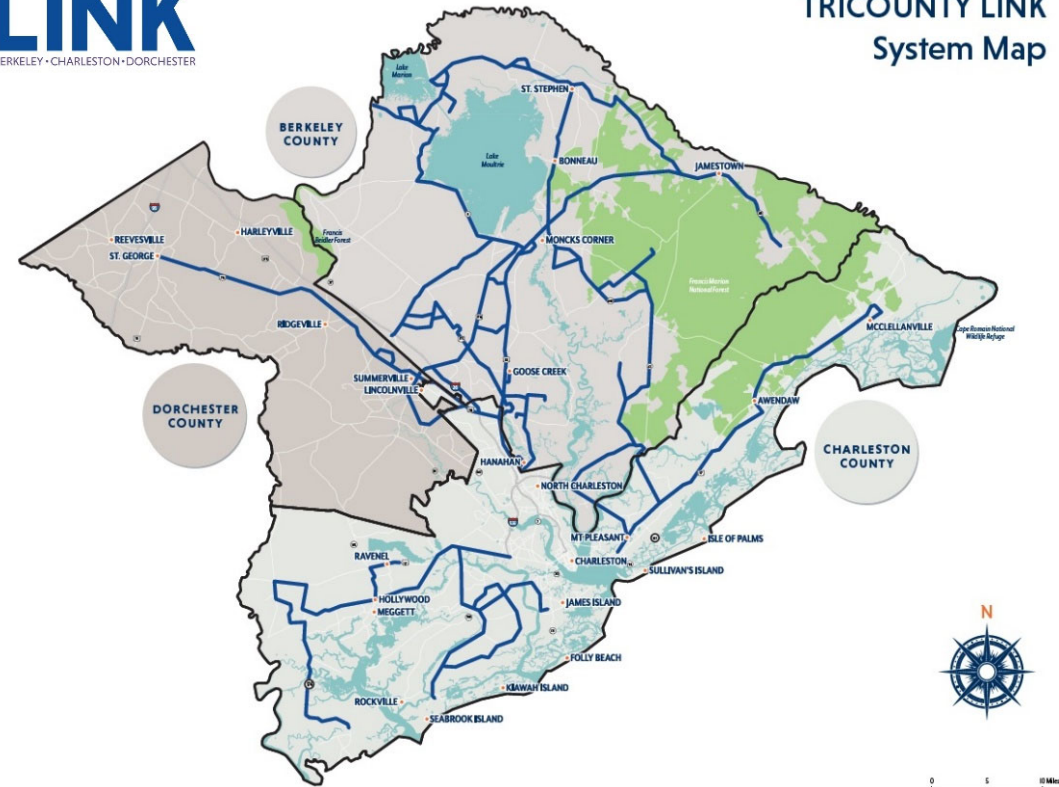
# Existing Transit Service

## TriCounty Link

- TriCounty Link provides transit services in the rural areas of the BCD region with fares at \$2.50.
- There are 10 fixed-routes, 2 commuter routes, a zone-based demand response service, and 8 park-n-ride locations.
- Began in 1996 as the BCD Rural Transportation Management Authority but changed to its current name in 2007.



TRICOUNTY LINK  
System Map



# Existing Transit Service

## TriCounty Link - US 52 Corridor

### Routes operating within or connecting to the US 52 BRT Study Area:

- B101 Moncks Corner Jamestown (local)
- B102 Moncks Corner/Goose Creek (local)
- B104 Moncks Corner/St. Stephen (local)
- B105 Moncks Corner/Mt. Pleasant (local)
- D305 Summerville Connector (local)
- CS1 Moncks Corner/North Charleston (commuter)
- CS2 Summerville/Northern Charleston (commuter)
- CS8 Link 2 Lunch (on-demand)
- D305 Summerville Connector (local)

### Park-n-Ride (PNR) Locations

- Berkeley County PNR
- Goose Creek PNR
- Rivers Avenue PNR
- Santee Cooper PNR



# LCRT Connection

- Ladson/Fairgrounds to WestEdge/Medical District
- 3 PNR
- 70-minute end-to-end travel time
- 10-minute weekday service during peak and daytime hours
- 21-hour service during the week
- 20 – 30-minute service on weekends
- Connects to CARTA and TriCounty Link services

PNR Location, connection to the US 52 BRT Corridor

